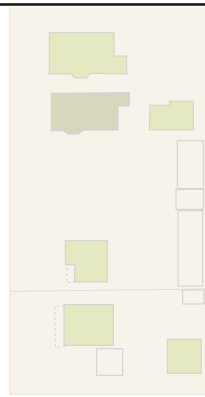
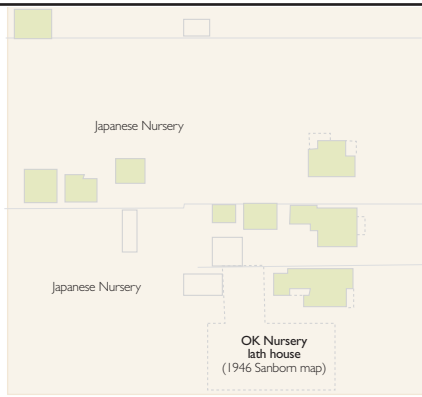
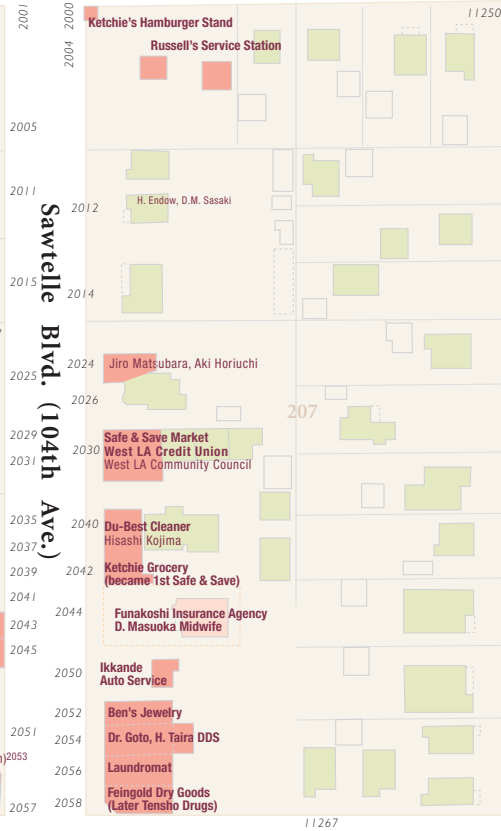
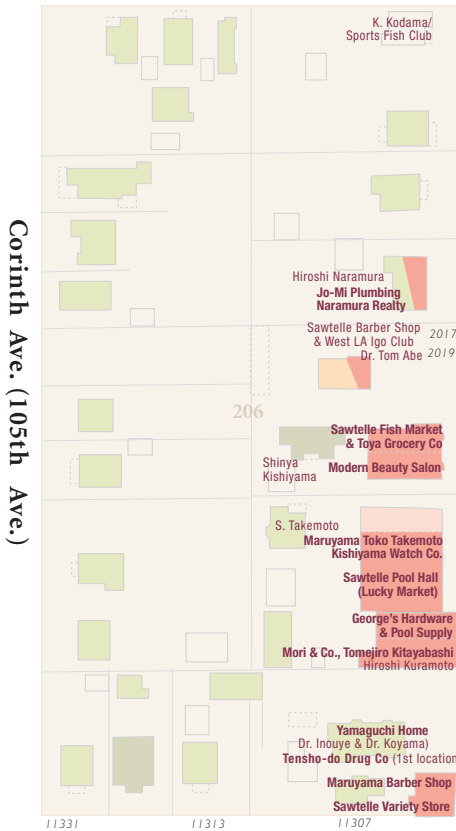


Sawtelle District/ West Los Angeles Japanese American Businesses on the 2000 block of Sawtelle Blvd. (generally post-WWII)



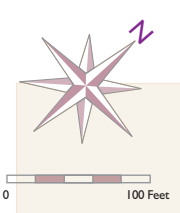
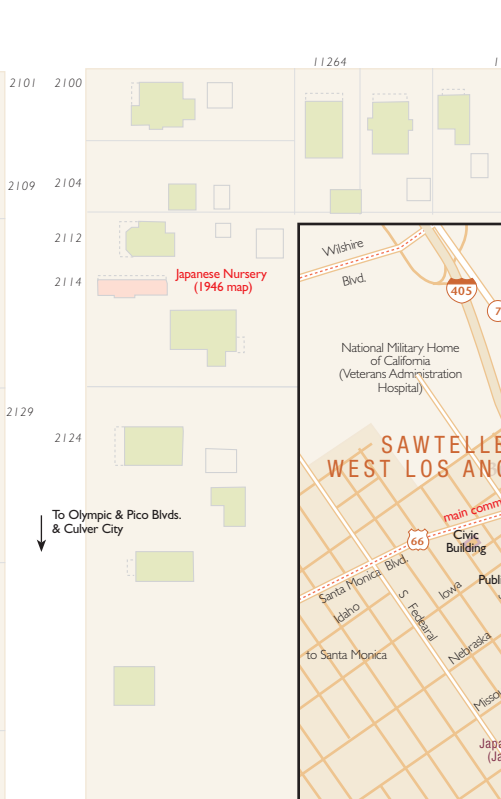
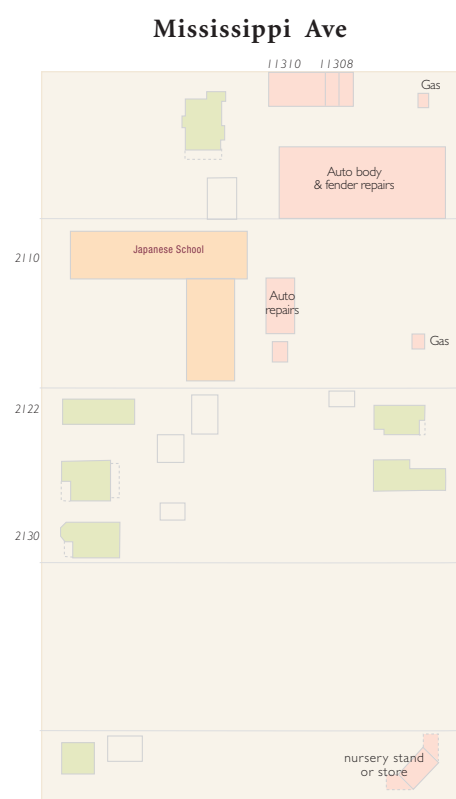
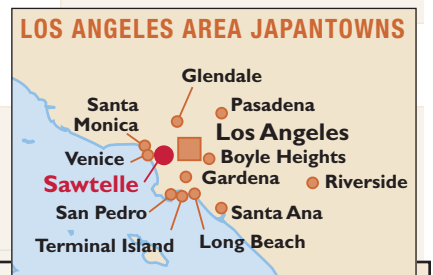
To Santa Monica Blvd commercial district

La Grange Ave.



MAP LEGEND

- Grocery Japanese American businesses
- grocery Other businesses
- warehouse Industrial uses
- School Community
- Church Churches
- Family Dwelling & family name
- Apartments and Flats
- Ryokan Hotels and Rooming Houses
- Building & porch
- 14100 Address
- Note Sanborn map note (1928 or '46)
- Note Modern landmarks



This map was created by Ben Pease ©2008 for **Japantown Atlas** (www.japantownatlas.com), which is funded by the California Civil Liberties Public Education Project (CCLPEP). Source map of post-war businesses courtesy of Preserving California's Japantowns Project <http://californiajapantowns.org>. Use of Sanborn Insurance Co. maps courtesy of The Sanborn Library LLC; used by permission.